



OBS12620HR (12V 620W)

High Rate VRLA Battery

OSONIX High Rate VRLA has High-Density AGM technology, Manufactured from high purity lead (99.99%), its advanced lead tin calcium alloy reduces grid corrosion and promotes long battery life for up to 12 years.

► Features

- Absorbed Glass Mat technology (AGM) for greater than 99.99% recombination efficiency
- Special designed thin grids for optimized high power density
- Oversized partition intercells welds, providing low resistance connections & minimal power loss
- Compliance with IATA/ICAO Special Provisions Compliance A67 (No restrictions for rail, road, sea & air transport)
- Superior performance at high rates of discharge & recharge

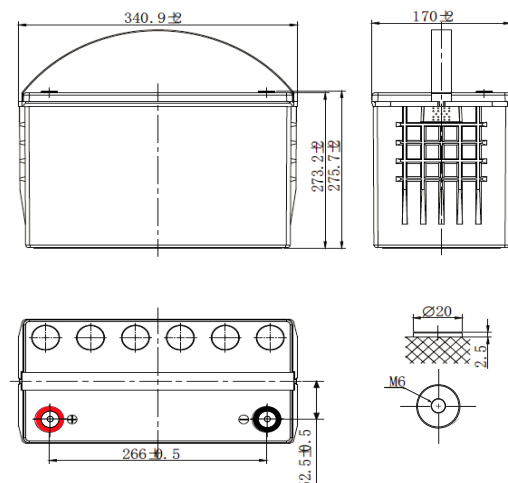
► Applications

- Uninterruptible power supply (UPS)
- Hospitals & Testing Laboratories
- Telecommunications
- Data Centers
- Banks & Financial Centers
- Power Generation Plants
- High Power Backup Supply



SPECIFICATIONS Standard @ 25°C (77°F)		
Nominal Voltage		12 V
Nominal Rate (15 min to 1.67 V/cell)		620 W/cell
Nominal Capacity (20 hrs. to 1.80 V/cell)		156 Ah
Rated capacity	157.8 Ah	(20hrs, 7.89A, 1.75V/cell)
	147.2 Ah	(8hrs, 18.4A, 1.75V/cell)
	124.2 Ah	(3hrs, 41.4A, 1.75V/cell)
	107 Ah	(1hrs, 107A, 1.67V/cell)
Max. Discharge Current		1800 A
Internal Resistance		3.0 mΩ
Operating Temp. Range	Discharge	-40 to 65°C (-40 to 149°F)
	Charge	0 to 54°C (32 to 129°F)
	Storage	-20 to 40°C (-4 to 104°F)
Nominal Operating Temp. Range		25 ± 3°C (77 ± 5°F)
Max. Charging Current		45 A
Charge voltage	Float	13.62 V
	Temp. Coefficient	-3 mV / cell / °C
	Equalization	14.1 to 14.4V
Self Discharge		≤3% / month

PHYSICAL SPECIFICATION		
Dimensions	Length	340.9 ±2 mm (13.42 in)
	Width	170 ±2 mm (6.69 in)
	Height	273.2 ±2 mm (10.76 in)
	Total Height	275.7 ±2 mm (10.85 in)
Weight		44.8 Kg (98.8 lb)
Terminal		M6
Container Mat. (Flame retardant)		PC-ABS UL94 HB
Recommended Torque		4 Nm (35.40 in-lb)
Maximum allowable torque		5.4 Nm (47.79 in-lb)



Compliance with:
IEC 60896 standard
CE, UL 1989, UL94 HB
IATF16949, OHSAS 18001, ISO 9001, ISO 14001 certified production



OBS12620HR (12V 620W)

High Rate VRLA Battery



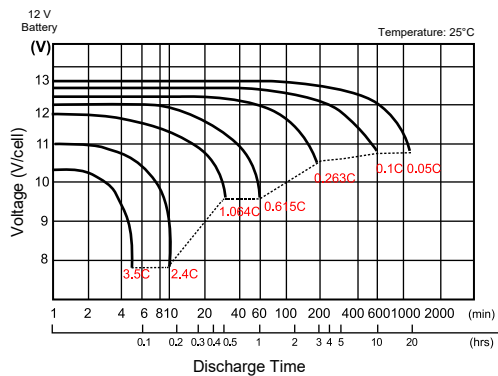
CONSTANT CURRENT DISCHARGE (AMPERES) AT 25°C (77°F)

Final V. / Time	5min	10min	15min	20min	30min	45min	1h	2h	3h	4h	5h	8h	10h	20h
1.85V/cell	364	288.6	249.7	218.6	160.4	117.3	94.2	54.1	38.7	31.0	26.4	17.7	14.7	7.65
1.80V/cell	419.2	330.4	278.3	238.8	171.4	123.3	98.0	56.6	40.4	32.3	27.6	18.2	15.0	7.80
1.75V/cell	458.2	361.7	301.5	254.9	182.4	126.8	100.8	58.2	41.4	33.2	28.2	18.4	15.2	7.89
1.70V/cell	493.6	391.2	320.8	268.1	189.4	131.4	104.7	59.0	42.2	33.7	28.6	18.7	15.4	7.96
1.67V/cell	551.0	412.0	338.3	278.5	197.0	136.5	107.0	60.1	42.7	34.2	28.9	18.9	15.5	8.02
1.60V/cell	595.5	419.0	349.8	286.2	200.9	138.6	108.8	61.0	43.2	34.6	29.2	19.1	15.6	8.08

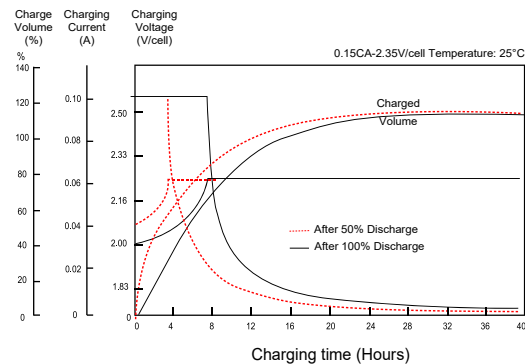
CONSTANT POWER DISCHARGE (WATTS/CELL) AT 25°C (77°F)

Final V. / Time	5min	10min	15min	20min	30min	45min	1h	2h	3h	4h	5h	8h	10h	20h
1.85V/cell	698.9	564.3	491.2	432.2	318.7	234.3	188.6	108.7	78.1	63.0	53.7	36.1	30.2	15.8
1.80V/cell	793.6	639.8	542.0	467.8	337.8	244.4	195.0	112.9	81.0	65.1	55.9	37.2	30.7	16.1
1.75V/cell	857.2	693.9	582.1	494.7	356.2	249.0	199.0	115.4	82.6	66.5	56.8	37.3	31.0	16.2
1.70V/cell	908.7	741.9	611.9	514.8	366.0	255.6	205.0	116.3	83.7	67.2	57.3	37.7	31.2	16.2
1.67V/cell	956.6	775.7	620.0	531.5	378.8	263.9	208.4	117.7	84.1	67.8	57.5	38.0	31.3	16.3
1.60V/cell	978.0	781.2	656.3	541.1	382.3	265.7	209.9	118.4	84.4	67.8	57.5	38.0	31.3	16.3

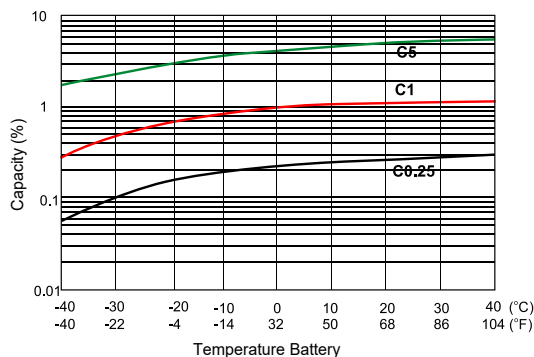
Discharge Characteristics



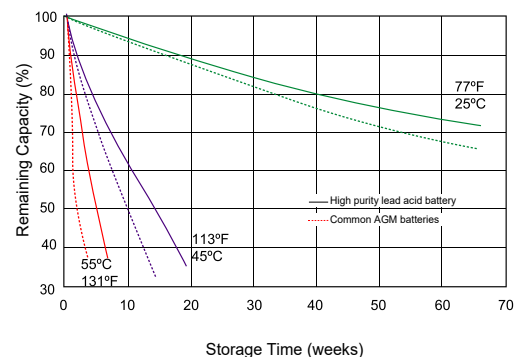
Float Charging Characteristics



Temperature effects in Relation to battery Capacity



Self-Discharge Features



* Product specifications are subject to change without notice.

* US-V2509-REV-1.02

©2025, OSONIX



Osonix

www.osonix.com

info@osonix.com

Kenjitsu USA

3111 Camino Del Rio North Suite 400
Mission Valley, San Diego CA 92108



AUTHORIZED DISTRIBUTOR

(619) 431 4777

@sales@kenjitsuusa.com

www.kenjitsuusa.com